

PRODUCT SPECIFICATIONS

GS24064B-Q-YSXFDYW-101

V1.0

ShenZhen Easterntronic LCM Co.,Ltd

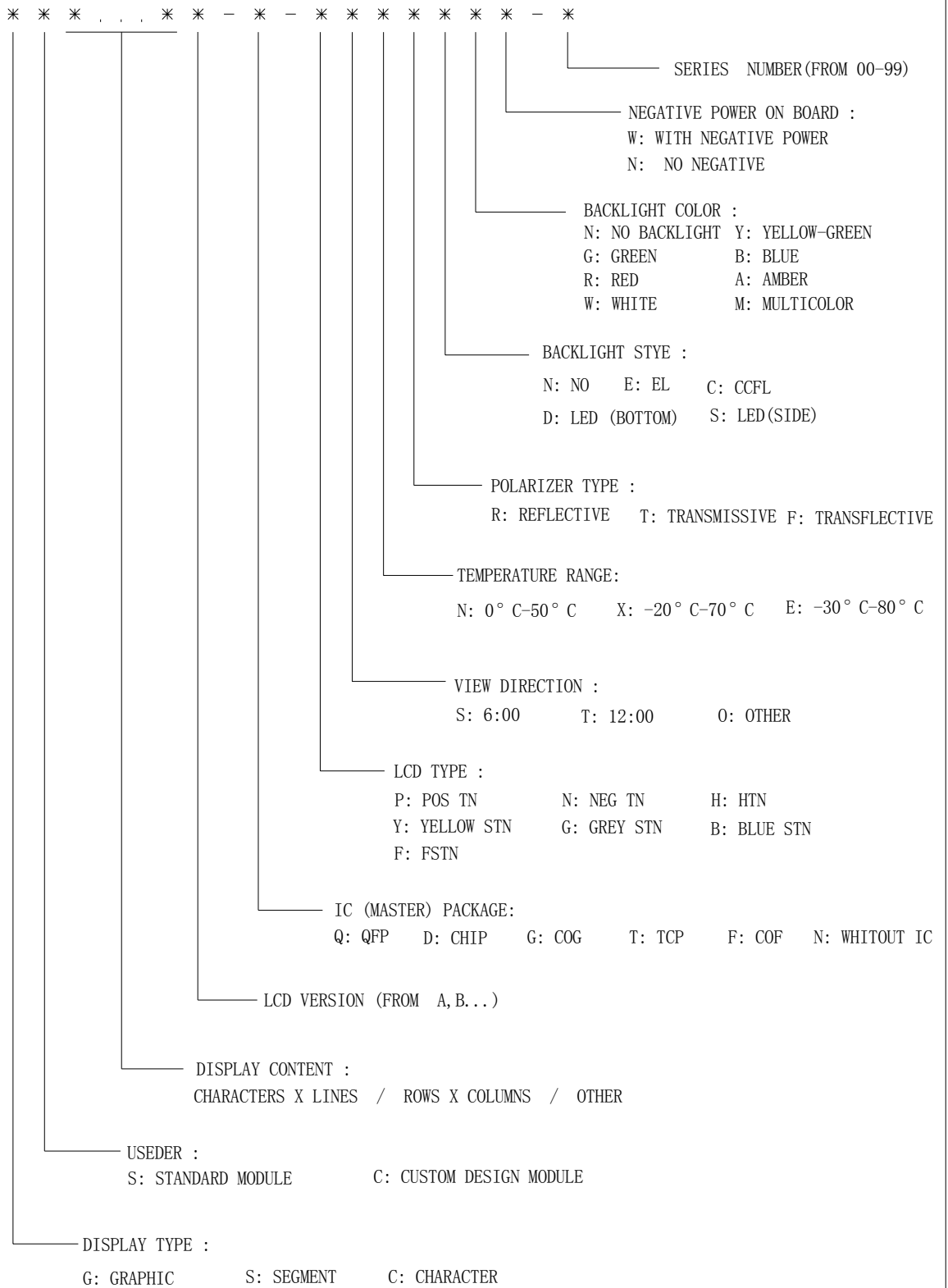
February 20, 2006

REVISION RECORD

REV	Description	Date
V1.0		February 20,2006

SECTIONS	DESCRIPTION	PAGE NO.
1.	LCD MODULE NUMBERING SYSTEM	4
2.	TYPE NUMBER AND DESCRIPTION	5
3.	MECHANICAL SPECIFICATIONS	6
4.	ELECTRICAL BLOCK DIAGRAM	7
	4.1 PIN DEFINITION	
	4.2 ELECTRICAL BLOCK DIAGRAM	
5.	POWER SUPPLY	8
6.	ELECTRICAL CHARACTERISTICS	9
7.	ABSOLUTE MAXIMUM RATINGS	10
8.	TIMING CHARACTERISTICS	11
9.	BELECTRO-OPTICAL CHARACTERISTIC	13
10.	PRECAUTION FOR USING LCM	15

LCD MODULE NUMBERRING SYSTEM



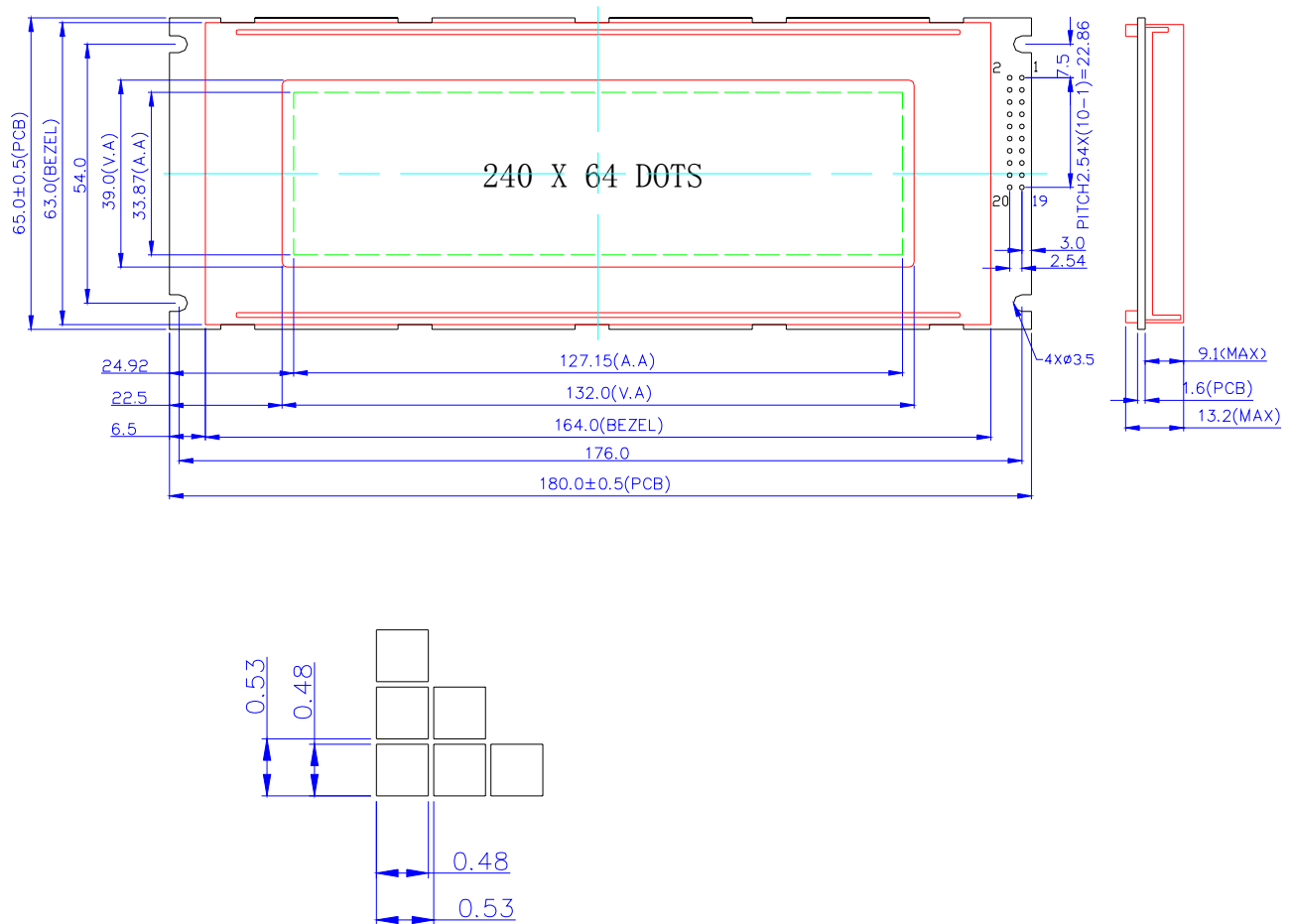
2. TYPE NUMBER AND DESCRIPTION

Type Number	:	GS24064B-Q-YSXFDYW-101
Description	:	240 X 64 DOTS
LCD Panel	:	STN , YELLOW-GREEN
Viewing angle	:	6H
Duty	:	1/64
Bias	:	1/9
Logic Voltage	:	5.0V
Operating Temperature:		-20°C--70°C
Storage Temperature	:	-30°C--80°C
Controller	:	T6963
Package (controller)	:	SMT

3. MECHANICAL SPECIFICATIONS:

ITEM	STANDARD VALUE	UNIT
DISPLAY CONTENT	240 (W) x 64 (H) DOTS	
MODULE DIMENSION	180.0 (W) x 65.0 (H) x 13.2 (H)	mm
DISPLAY AREA	132.0 (W) x 39.0 (H)	mm
DOT SIZE	0.48 (W) x 0.48 (H)	mm
DOT PITCH	0.53 (W) x 0.53 (H)	mm

MODLE DIMENSION DRAWING

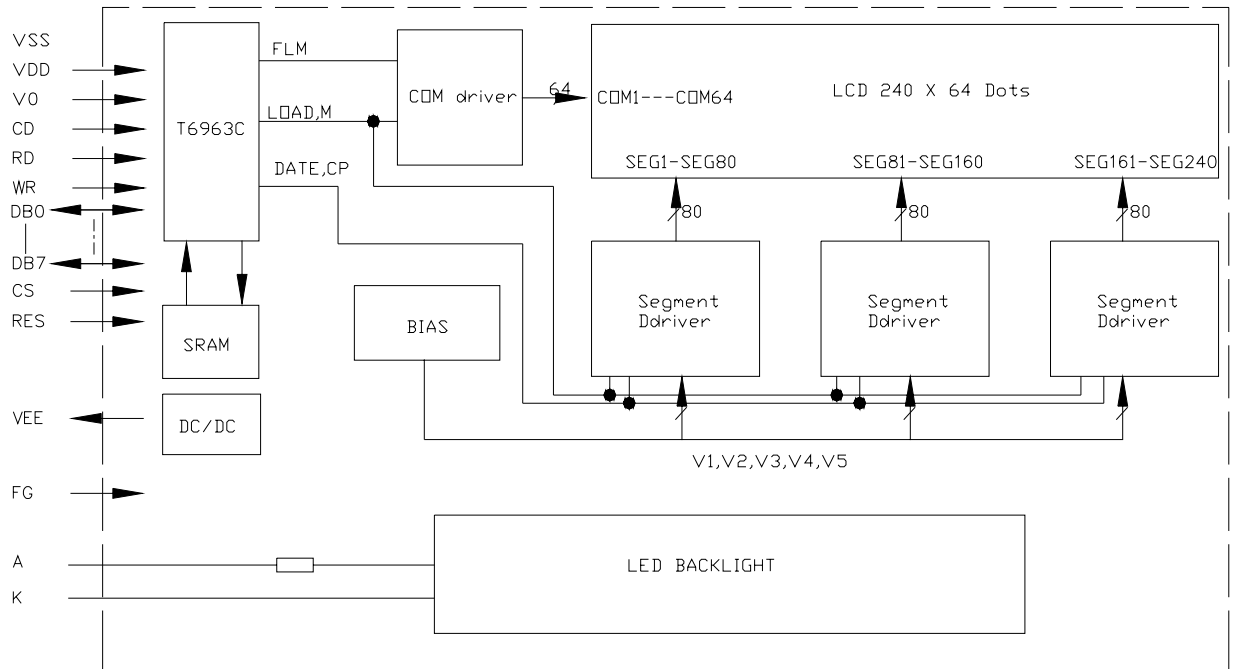


4. ELECTRICAL BLOCK DIAGRAM

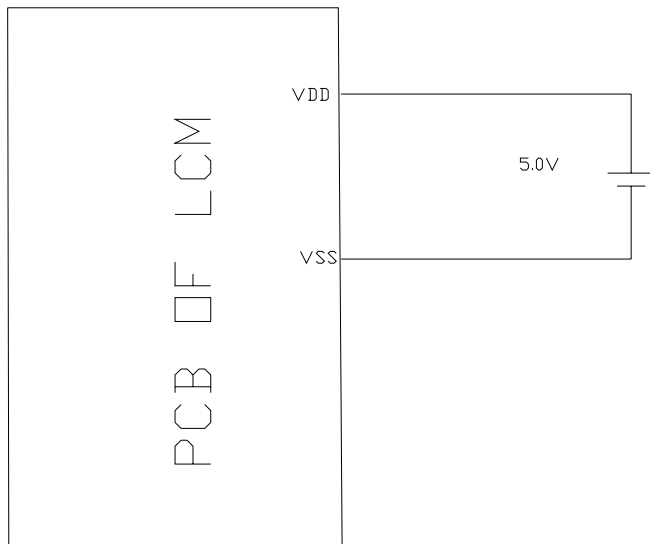
4.1 PIN DEFINITION

Pin No.	Symbol	Level	Funtion
1	FG	-----	Frame ground
2	Vss	0V	Ground
3	Vdd	5.0V	Power Supply
4	Vo	-----	Contrast Adjust
5	WR	H/L	Write stobe
6	RD	H/L	Read stobe
7	CS	H/L	Chip Select
8	CD	H/L	Command/Data
9	NC	-----	No connect
10	RST	-----	Reset
11	DB0	H/L	Data Bus Line
12	DB1	H/L	
13	DB2	H/L	
14	DB3	H/L	
15	DB4	H/L	
16	DB5	H/L	
17	DB6	H/L	
18	DB7	H/L	
19	FS	H/L	Font Selection
20	NC	-	No connect

4.2 ELECTRICAL BLOCK DIAGRAM



5. POWER SUPPLY



6. ELECTRICAL CHARACTERISTICS (at Ta=25°C, Vdd=5.0±5%)

ITEM	SYMBOL	CONDITION	MIN	TYP	MAX	UNIT
Supply Voltage(logic)	VDD-VSS	--	4.5	5.0	5.5	V
Supply Voltage(LCD)	VDD-V0	VDD=5.0V	--	12.5	--	V
Input signal voltage (E,DB0-7,R/W,RS)	Vih	“H”level	2.4	--	VDD	V
	Vil	“L”level	0	--	0.6	V
Output voltage for Logic	Voh	-Ioh=0.6mA	VDD-0.4	--	VDD	V
	Vol	Iol=1.6mA	0	--	0.4	V
Supply Current	Idd	--	--	8.0	10.0	mA
BackLight Voltage	A-K	--	--	4.2	--	V
BackLight Current			--	680	--	mA

NOTE: THIS CHARACTERISTICS FOR BACKLIGHT IS TEST WITHOUT RISISTANCES.

7. ABSOLUTE MAXIMUM RATINGS

7.1 ELECTRICAL ABSOLUTE RATINGS (VSS=0V)

ITEM	SYMBOL	MIN	MAX	UNIT
Power Supply for LOGIC	VDD-VSS	-0.3	7.0	V
Input Voltage	VI	-0.3	VDD	V
Static Electricity	-	-	-	-

Please Note: LCM should be grounded during handing it.

7.2 ENVIRONMENTAL ABSOLUTE MAXIMUM RATINGS

ITEM	Ambient Temperature		Humidity(Without Condensation)	
NORMAL TEMP	OPERATING	MIN	0	NOTE 2, 4
		MAX	50	
	STORAGE	MIN	-20	NOTE 3, 4
		MAX	70	
WIDE TEMP	OPERATING	MIN	-20	NOTE 4, 5
		MAX	70	
	STORAGE	MIN	-30	NOTE 4, 6
		MAX	80	

NOTE 2 Ta≤50°C: 85%RH max

Ta>50°C: Absolute humidity must be lower than the

Humidity of 85% RH at 50°C.

NOTE 3 To at -20°C will be <48hrs, at 70°C will be <120hrs.

NOTE 4 Background color changes slightly depending on ambient temperature
This phenomenon is reversible.

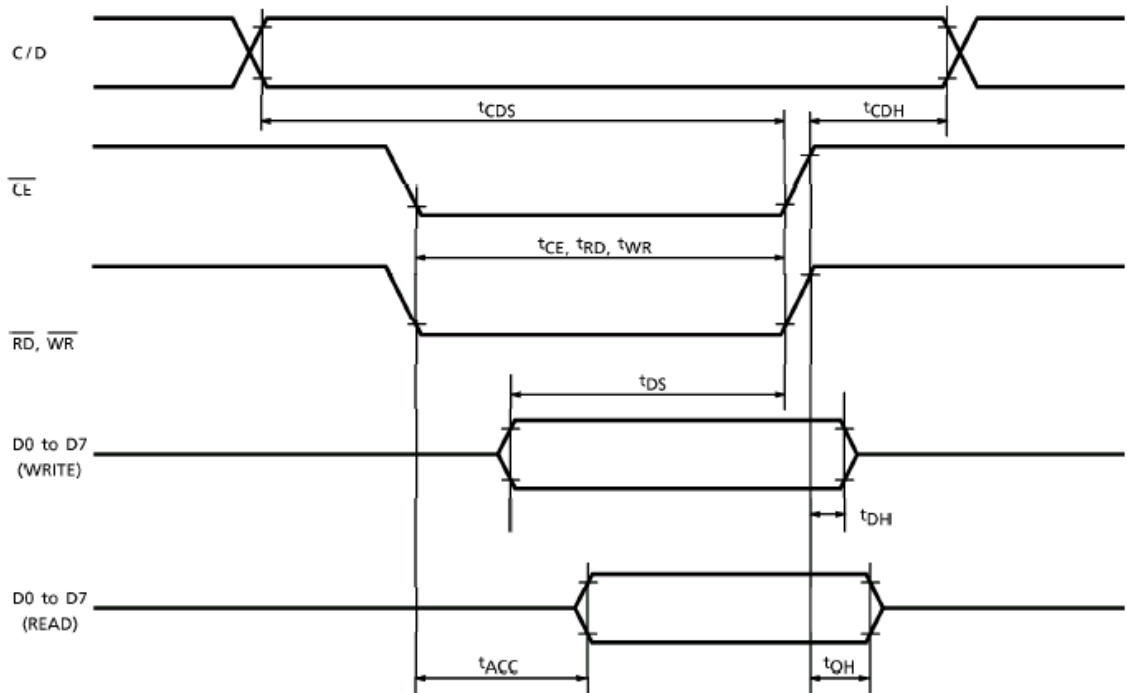
NOTE 5 $T_a \leq 70^\circ\text{C}$: 75%RH max

$T_a > 70^\circ\text{C}$: Absolute humidity must be lower than the
Humidity of 75% RH at 70°C.

NOTE 6 To at -30°C will be <48hrs, at 80°C will be <120hrs.

8. TIMING CHARACTERISTICS

Bus Timing



TEST CONDITIONS (Unless otherwise noted, $V_{\text{DD}} = 5.0\text{V} \pm 10\%$, $V_{\text{SS}} = 0\text{V}$, $T_a = -20$ to 75°C)

ITEM	SYMBOL	TEST CONDITIONS	MIN	MAX	UNIT
C/D Set-up Time	t_{CDS}	—	100	—	ns
C/D Hold Time	t_{CDH}	—	10	—	ns
$\overline{\text{CE}}, \overline{\text{RD}}, \overline{\text{WR}}$ Pulse Width	$t_{\text{CE}}, t_{\text{RD}}, t_{\text{WR}}$	—	80	—	ns
Data Set-up Time	t_{DS}	—	80	—	ns
Data Hold Time	t_{DH}	—	40	—	ns
Access Time	t_{ACC}	—	—	150	ns
Output Hold Time	t_{OH}	—	10	50	ns

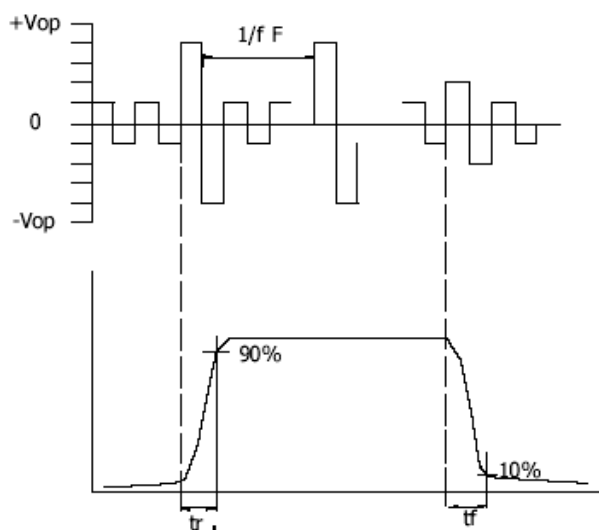
9. BELECTRO-OPTICAL CHARACTERISTIC

ITEM	SYMBOL	CONDITI ON	MIN.	TYP.	MAX.	UNIT	REF.
Contrast	CR	25°C	--	12	--		Note1
Rise Time	tr	25°C	--	160	240	ms	Note2
Fall Time	tf	25°C	--	100	150	ms	note 2
Viewing Angle	$\theta 1 - \theta 2$	25°C	--	--	60	DEG	Note 3
	$\varnothing 1, \varnothing 2$		-40	--	40		
Frame Frequency	Ff	25°C	--	70	--	Hz	note 2

Note(3): Contrast ratio is defined under the following condition:

$$CR = \frac{\text{brightness of non-selected condition}}{\text{brightness of non-selected condition}}$$

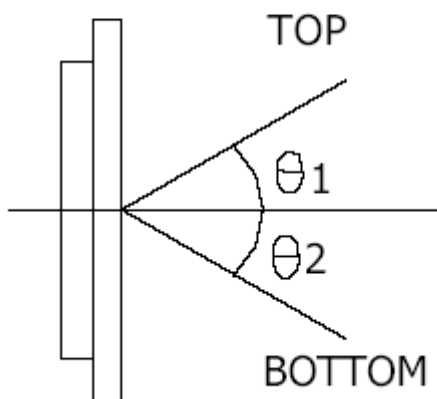
- Temperature-----25C
- Frame Frequency-----64Hz
- Viewing angle----- $\theta = 0, \varnothing = 0$
- Operating Voltage---5.0V

Note(1): definition of response time:**Condition:**

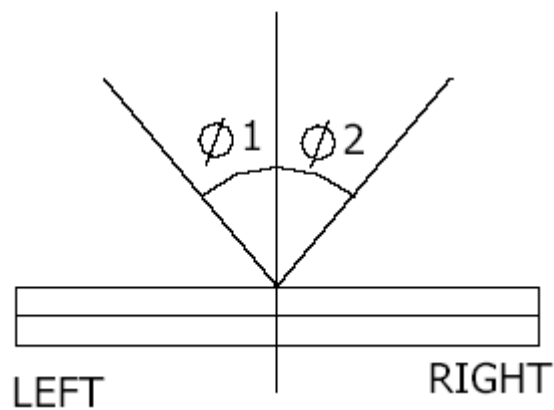
- Temperature-----25C
- Frame Frequency-----64Hz
- Viewing angle----- $\theta = 0, \varnothing = 0$
- Operating Voltage---5.0V

Note(2): definition of view angle:

TOP-BOTTOM DIRECTION



RIGHT-LEFT DIRECTION



10. PRECAUTION FOR USING LCM**1. LIQUID CRYSTAL DISPLAY (LCD)**

LCD is made up of glass, organic sealant, organic fluid, and polymer based polarizers. The following precautions should be taken when handling,

- (1). Keep the temperature within range of use and storage. Excessive temperature and humidity could cause polarization degradation, polarizer peel off or bubble.
- (2). Do not contact the exposed polarizers with anything harder than an HB pencil lead. To clean dust off the display surface. Wipe gently with cotton. Chamois or other soft material soaked in petroleum benzine.
- (3). Wipe off saliva or water drops immediately. Contact with water over a long period of time may cause polarizer deformation or color fading, while an active LCD with water condensation on its surface will cause corrosion of ITO electrodes.
- (4). Glass can be easily chipped or cracked from rough handling, especially at corners and edges.
- (5). Do not drive LCD with DC voltage.

2. Liquid Crystal Display Modules**2.1 Mechanical Considerations**

LCM are assembled and adjusted with a high degree of precision. Avoid excessive shocks and do not make any alterations or modifications. The following should be noted.

- (1). Do not tamper in any way with the tabs on the tabs on the metal frame.
- (2). Do not modify the PCB by drilling extra holes, changing its outline, moving its components or modifying its pattern.
- (3). Do not touch the elastomer connector, especially insert a backlight panel (for example, EL).
- (4). When mounting a LCM make sure that the PCB is not under any stress such as bending or twisting. Elastomer contacts are very delicate and missing pixels could result from slight dislocation of any of the elements.
- (5). Avoid pressing on the metal bezel, otherwise the elastomer connector could be deformed and lose contact, resulting in missing pixels.

2.2. Static Electricity

LCM contains CMOS LSI's and the same precaution for such devices should apply, namely

- (1). The operator should be grounded whenever he/she comes into contact with the module. Never touch any of the conductive parts such as the LSI pads, the copper leads on the PCB and the interface terminals with any parts of the human body.
- (2). The modules should be kept in antistatic bags or other containers resistant to static for storage.

- (3). Only properly grounded soldering irons should be used.
- (4). If an electric screwdriver is used, it should be well grounded and shielded from commutator sparks.
- (5). The normal static prevention measures should be observed for work clothes and working benches; for the latter conductive (rubber) mat is recommended.
- (6). Since dry air is inductive to statics, a relative humidity of 50-60% is recommended.

2.3. Soldering

- (1). Solder only to the I/O terminals.
- (2). Use only soldering irons with proper grounding and no leakage.
- (3). Soldering temperature: $280\text{ }^{\circ}\text{C} \pm 10$
- (4). Soldering time: 3 to 4 sec.
- (5). Use eutectic solder with resin flux

°C

fill.

- (6). If flux is used, the LCD surface should be covered to avoid flux spatters. Flux residue should be removed afterwards.

2.4. Operation

- (1). The viewing angle can be adjusted by varying the LCD driving voltage V_0 .
- (2). Driving voltage should be kept within specified range; excess voltage shortens display life.
- (3). Response time increases with decrease in temperature.
- (4). Display may turn black or dark blue at temperatures above its operational range; this is (however not pressing on the viewing area) may cause the segments to appear "fractured".
- (5). Mechanical disturbance during operation (such as pressing on the viewing area) may cause the segments to appear "fractured".

2.5. Storage

If any fluid leaks out of a damaged glass cell, wash off any human part that comes into contact with soap and water. Never swallow the fluid. The toxicity is extremely low but caution should be exercised at all the time.

2.6. Limited Warranty

Unless otherwise agreed between Easterntronic and customer, Easterntronic will replace or repair any of its LCD and LC, which is found to be defective electrically and visually when inspected in accordance with Easterntronic acceptance standards, for a period of one year from date of shipment. Confirmation of such date shall be based on freight documents. The warranty liability of Easterntronic is limited to repair and/or replacement on the terms set forth above. Easterntronic will not be responsible for any subsequent or consequential event

Declaration of conformity regarding the limitation of dangerous substances

深圳易事通液晶显示模块有限公司

SHENZHEN EASTERNTRONIC LCM CO., LTD.

4F , B3 Building , FuYuan Industrial Zone , FuYong Town,

BaoAn District, ShenZhen, P.R.China

DECLARATION OF CONFORMITY REGARDING THE LIMITATION OF
DANGEROUS SUBSTANCES

WE , SHENZHEN EASTERNTRONIC LCM CO ., LTD,

Declare that the product of GS24064B-Q-YSXFDYW-101 complies
with:

The directive 2002/95/EC Dated 2003/01/27 regarding the
limitation of dangerous substances, in particular to
clause 4 which forbids the use of the following elements:

- Lead
- Mercury
- Cadmium
- Hexavalent chromium
- Polybrominated biphenyls
- Polybrominated diphenylethers

And to the annex which points out the exempted implementations

To the directive 73/23/eec dated 1973/02/19 and the standard
EN60335-1 regarding prohibition of following elements:

- Oils containing polychlorinated biphenyl
- Asbestos
- Radioactive substances

Name: Ewing Liu /

SHENZHEN EASTERNTRONIC LCM CO ., LTD.

Issued on November 25, 2005

According with the proposal of Technical Adaption
Committee(TAC) of a limit of 0.1% by weight for lead
hexavalent chromium, mercury, PBBs and PBDRs and 0.01% by
weight for Cadmium

-----2