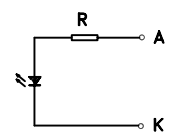
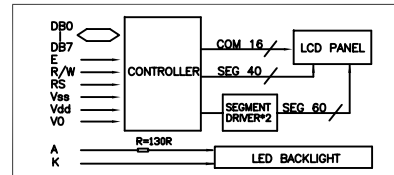


PIN ASSIGNMENT		
PIN	SYMBOL	FUNCTION
1	Vss	Power Supply(GND)
2	Vdd	Power Supply(+5V)
3	Vo	Contrast Adjust
4	RS	Instruction/Data Register Select
5	R/W	Data Read/Write
6	E	Enable Signal
7-14	DB0-DB7	Data Bus Line
15	A	Power Supply for LED BL(+)
16	K	Power Supply for LED B/L(-)



- NOTES:**
1. DISPLAY TYPE : BLUE STN, Negative
 2. POLARIZER TYPE : Transmissive
 3. VIEWING DIRECTION : 6:00
 4. DUTY : 1/16
 5. BIAS : 1/5
 6. OPERATION VOLTAGE : 5.0V
 7. OPERATION TEMPERATURE : -20°C-70°C
 8. STORAGE TEMPERATURE : -30°C-80°C
 9. DRIVER IC : ST7066U-OB
 10. BACKLIGHT : WHITE LED

GENERAL TOLERANCES	
FIELD	TOLERANCES
0,00 - 0,50	±0,05
0,51 - 6,00	±0,1
6,01 - 30,00	±0,2
30,01 - 120,00	±0,3
120,01 -	±0,5

Eastertronic LCD Group

DESIGNED BY: <i>CLP</i>	CS2002B-D-BSXTSWN-103	VERSION: A
CHECKED BY:		NO.: OF
APPROVED BY:		UNIT: MM
CONFIRMED BY:		DATE: 2009-11-02