

APC-18W5

18" WXGA TFT Fanless Plastic Multi-Touch Full Flat Panel
PC with ATOM Dual Core Solution

Quick Reference Guide

1st – 05 September, 2011

Copyright Notice

Copyright © 2011 Avalue Technology Inc., ALL RIGHTS RESERVED.

Part No. E201718W5A1R

Contents

1. Getting Started	3
1.1 Safety Precautions	3
1.2 Packing List	3
1.3 System Specifications	4
1.4 System Overview.....	6
1.4.1 Front View	6
1.4.2 Rear View.....	7
1.5 System Dimensions.....	8
2. Hardware Configuration	10
2.1 Jumper and Connector Settings, Driver and BIOS Installation	10
2.2 Stand Installation	11

1. Getting Started

1.1 Safety Precautions

Warning!



Always completely disconnect the power cord from your chassis whenever you work with the hardware. Do not make connections while the power is on. Sensitive electronic components can be damaged by sudden power surges. Only experienced electronics personnel should open the PC chassis.

Caution!



Always ground yourself to remove any static charge before touching the CPU card. Modern electronic devices are very sensitive to static electric charges. As a safety precaution, use a grounding wrist strap at all times. Place all electronic components in a static-dissipative surface or static-shielded bag when they are not in the chassis.



1.2 Packing List



- 1 x 18" WXGA TFT Fanless Plastic Multi-Touch Full Flat Panel PC with ATOM Dual Core Solution
- 1 x CD/DVD-ROM containing the following:
 - Quick Reference Guide (this manual in PDF file)
 - Ethernet driver and utilities
 - VGA drivers and utilities
 - Audio drivers and utilities
 - Wi-Fi drivers and utilities
 - Touch controller drivers and utilities
- 1 x Power Adapter
- 1 x Stand for Panel PC (with 6 screws & 5 rubber feet)



If any of the above items is damaged or missing, contact your retailer.

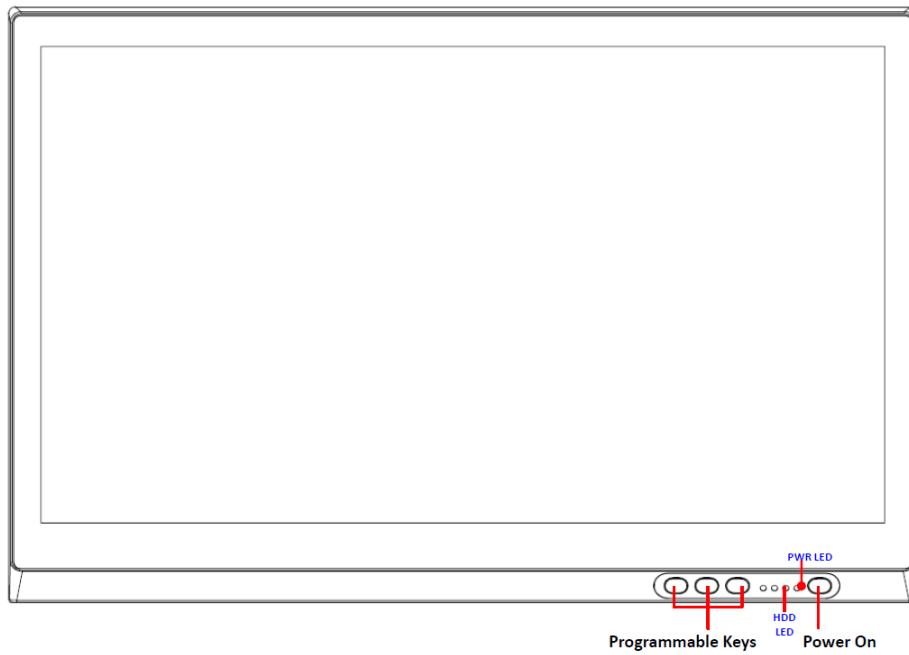
1.3 System Specifications

Panel 	
	APC-18W05
LCD size	18.5", 16 : 9
Display type	WSGA TFT
Resolution	1366 x 768
Color	16.7M
Pixel pitch	0.300mm(H) x 0.300mm(V)
Luminance	300 cd/m ²
Contrast ratio	300
Viewing angle	80(U), 80(D), 85(L), 85(R)
Response time	5 ms
Backlight	2 x CCFL
Touch Type	5 Wire resistive
Touch Light Transmission	80%
Touch Interface	USB
System 	
Board	EBM-PNV
CPU	Onboard Intel® Atom™ D525 Dual-Core 1.8 GHz CPU
System Chipset	Intel ICH8-M
I/O Chip	Winbond W83627DHG-P
Memory	Onboard 1 GB up to 2GB & one 204-pin SODIMM support up to 4 GB DDR3 800 SDRAM
SSD	One CF socket supports Type I / II Compact Flash Card
HDD Drive Bay	One 2.5" SATA HDD/SSD
WiFi	Optional USB or Mini PCIe WiFi module
Watchdog Timer	Reset: 1 ~ 255min. and 1sec. or 1min./step
H/W Status Monitor	Monitoring system temperature and voltage. Auto throttling control when CPU overheats
Expansion Slot	One Mini PCIe slot

Rear Panel I/O 	
Serial Port	1 x RS-232
Ethernet	1 x RJ-45
VGA	1 x DB-15
Audio port	1 x Line out
USB	2 x USB 2.0
KB/MS	1 x PS/2 KB & MS
Speaker	2W x 2
Mechanical & Environmental 	
System Fan	Passive Heat Sink
Color	Front & Rear panel Black (Plastics)
Mounting	Wall/Stand/VESA 100 mm X 100 mm
Power Input	100~250 Vdc/ 47~63 Hz
Power Adapter	Input: 100~250 Vdc/ 47~63 Hz Output: +12 Vdc / 5 A (60W)
Operating Temperature	0 to 40°C (32 to 140°F)
Storage Temperature	-10°C to 50°C
Relative Humidity	0%~90% relative humidity, non-condensing
Dimensions	443 x 290 x 59.8 mm
Weight	4.54Kgs

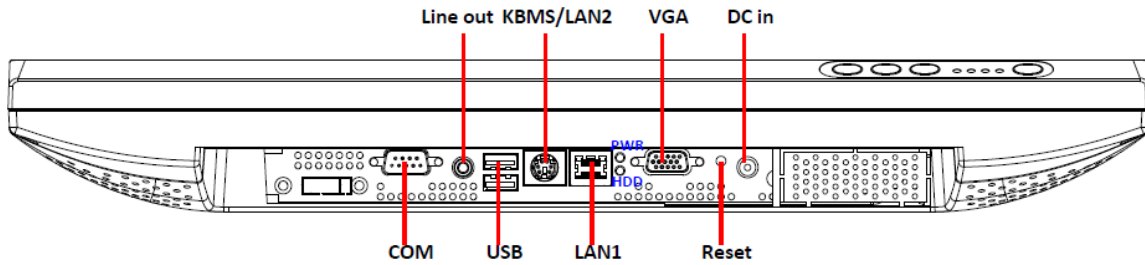
1.4 System Overview

1.4.1 Front View



Note: Programmable keys are available to be programmed by the user; they are unable to work unless programmed.

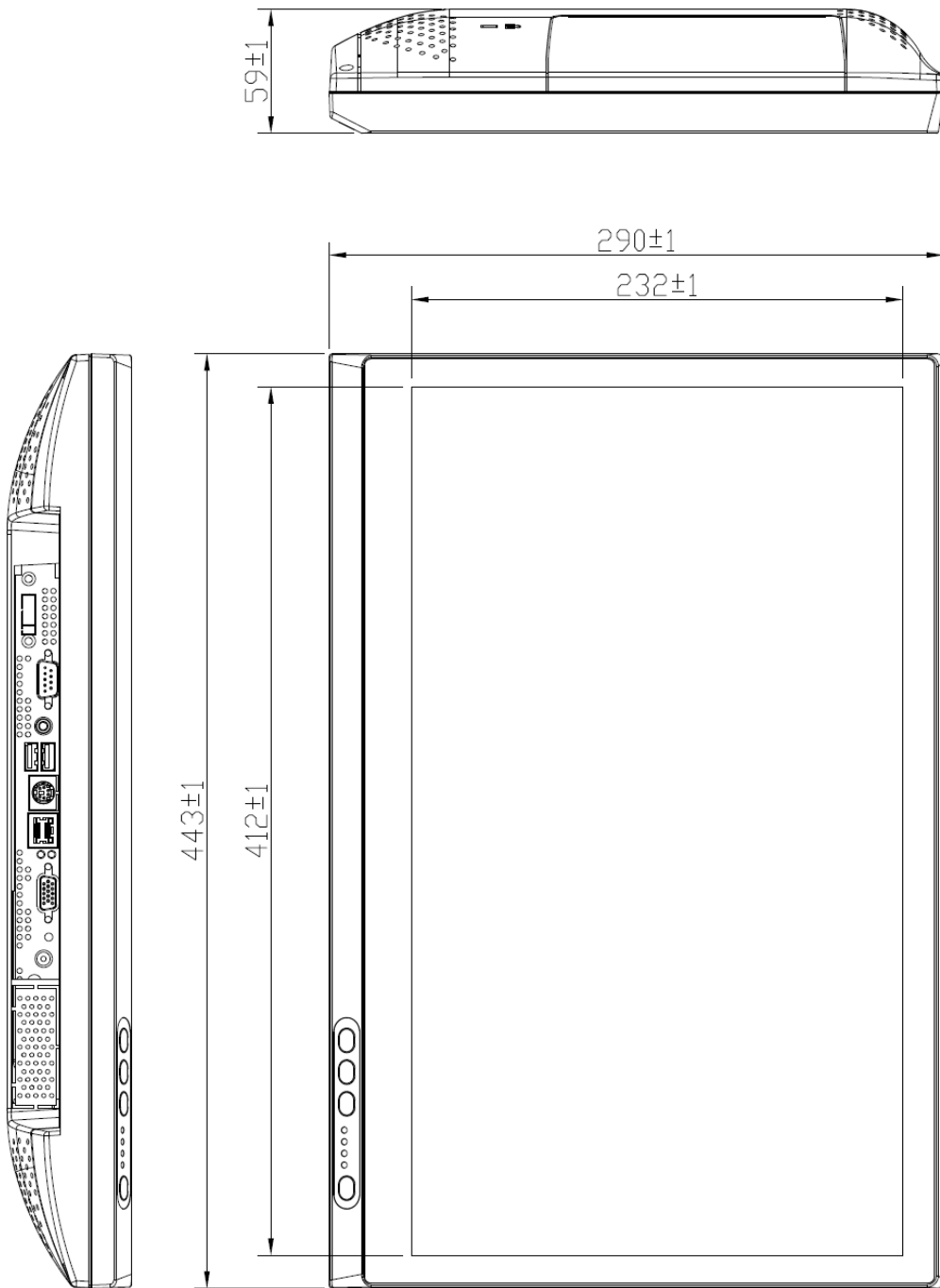
1.4.2 Rear View



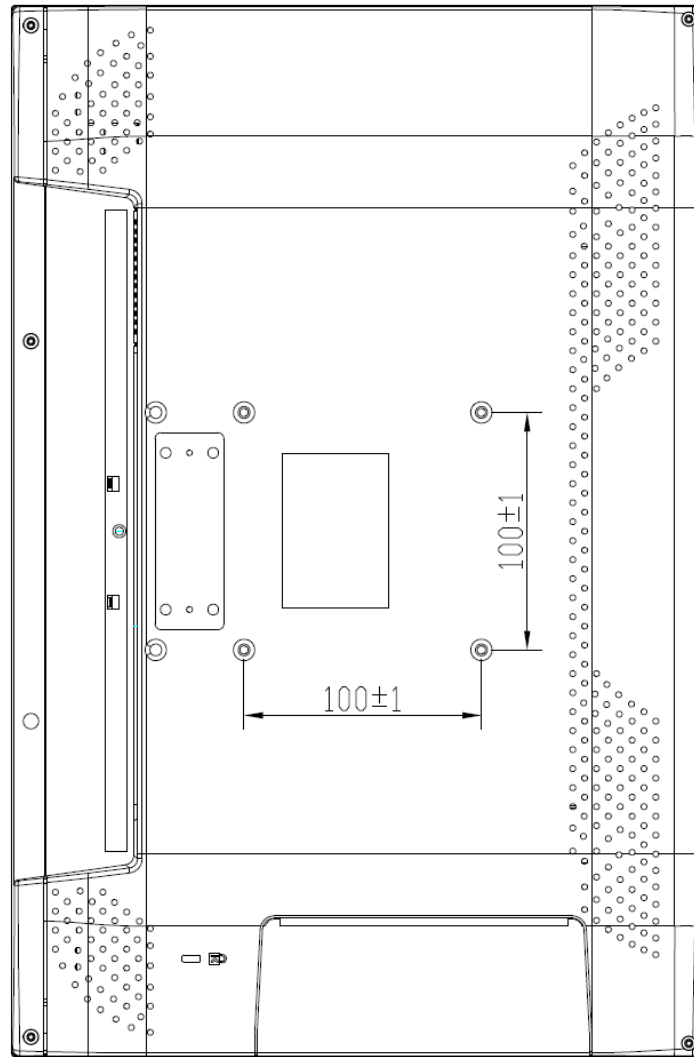
Connectors

Label	Function	Note
COM	Serial port	DB-9 male connector
DC in	DC-in power connector	
HDD	HDD LED	
LAN	10/100/1000Base-Tx Ethernet connector	RJ-45
KBMS	PS/2 keyboard & mouse	6-pin Mini DIN
LINE OUT	Line-out audio jack	
PWR	Power LED	
Reset	Rest button	
USB	USB 2.0 connector	
VGA	CRT connector	DB-15 female connector

1.5 System Dimensions



(Unit: mm)



2. Hardware Configuration

2.1 Jumper and Connector Settings, Driver and BIOS Installation

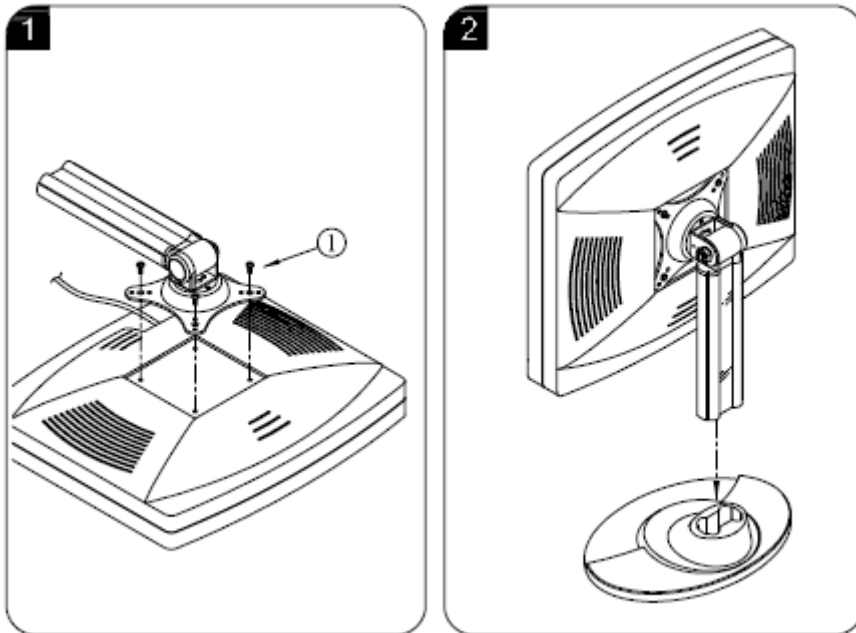
- Please refer to EBM-PNV Quick Installation Guide or User's Manual.



Note: If you need more information, please visit our website:

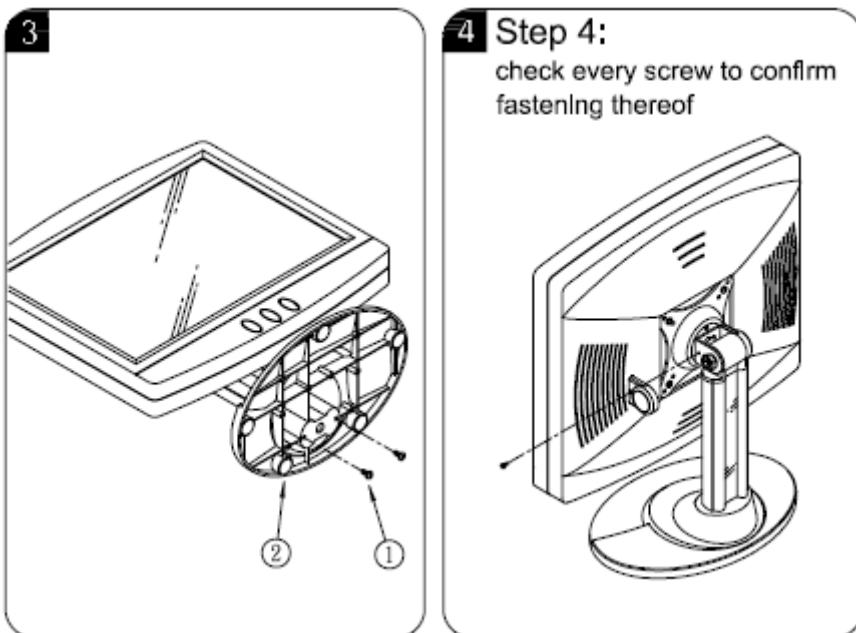
<http://www.avalue.com.tw>

2.2 Stand Installation



Step 1. Attach one side of the mounting to your system by means of 4 screws as indicated

Step 2. Properly seat the other side of the stand into the plastic plate.



Step 3. Attach the stand to the plate by means of 2 screws and Install rubber feet onto the bottom of the plate.

